



HEADED REINFORCEMENT CORP.



# Headed Bars now in ACI !

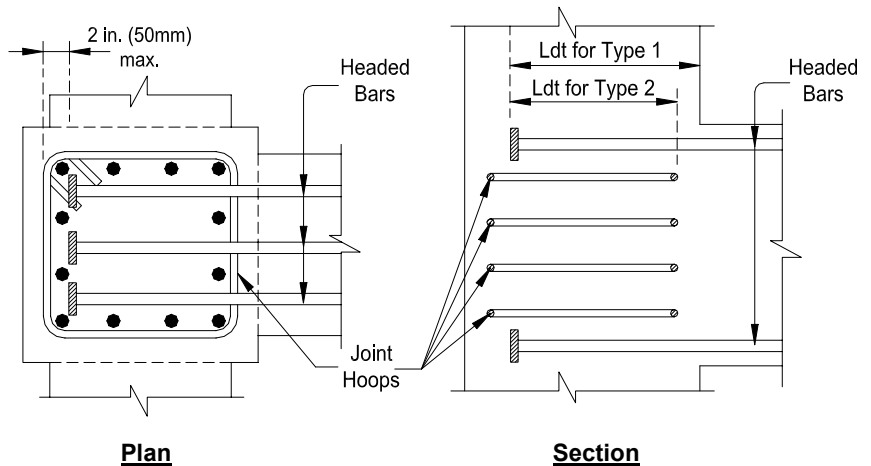
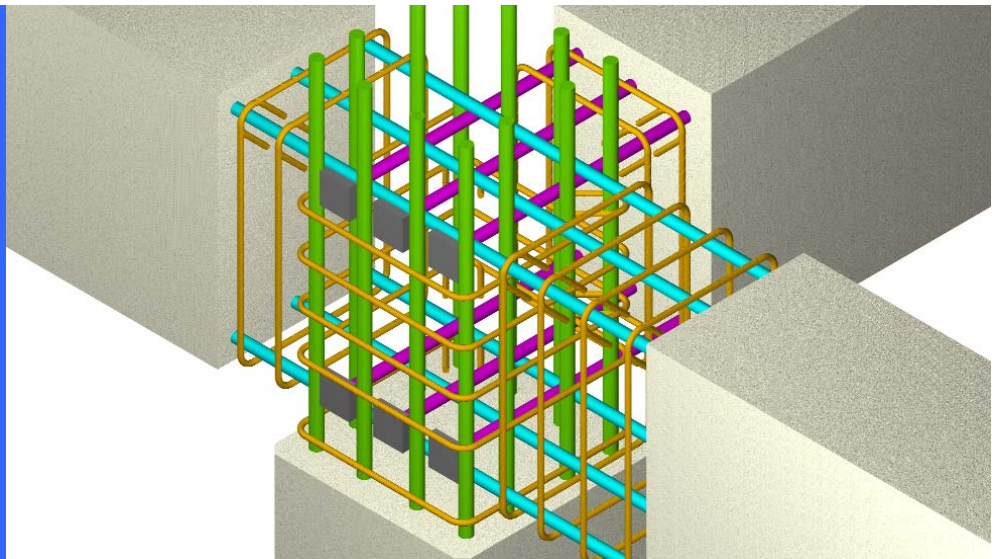
## ACI 352R-02

Recommendations for Design of Beam-Column Connections in Monolithic Reinforced Concrete Structures

Chapter 4.5.3:

“Headed Bars should meet ASTM Specification A 970”

“For Type 1 and Type 2 connections, the development length  $L_{dt}$  of a Headed Bar should be taken as 3/4 of the value computed for hooked bars.”



### ACI Beam-Column Connection Using Headed Bars

Although Headed Bars are already being used in a wide range of applications by progressive Structural Engineers on the West Coast, ACI is now offering design recommendations for Beam-to-Column connections.

HRC manufactures Headed Bars according to ASTM A 970, Caltrans Specifications, ICBO, and City of L.A.

ACI 352R-02 is available at : [www.aci-int.org](http://www.aci-int.org). (Search bookstore for “352”)

#### Headed Bars result into :

1. Superior anchorage and structural performance.
2. Simple and easy rebar installation. Pre-tied beam reinforcement can also be used.
3. Reduced congestion. Allows use of fewer, larger bar sizes.

#### HEADED REINFORCEMENT CORP.

11200 Condor Ave.  
Fountain Valley, CA 92708

[www.hrc-usa.com](http://www.hrc-usa.com)

Phone: 714-557-1455 & 1-800-HRC-6775

Fax: 714-557-4460

Email: [sales@hrc-usa.com](mailto:sales@hrc-usa.com)