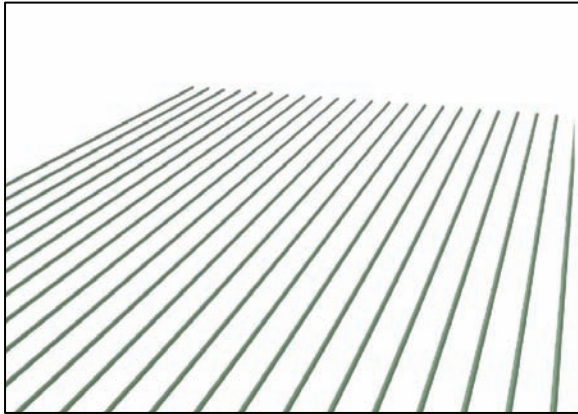
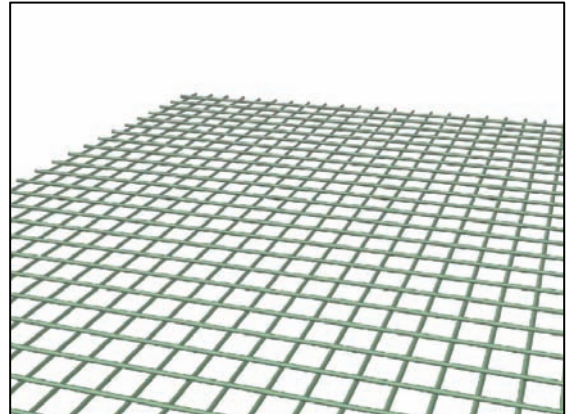


Multi-storey Building

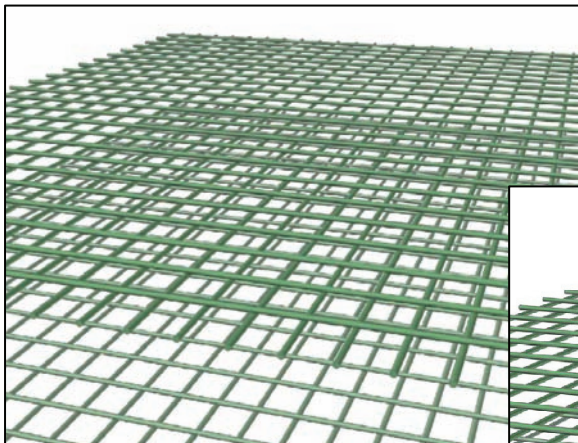
Base plate



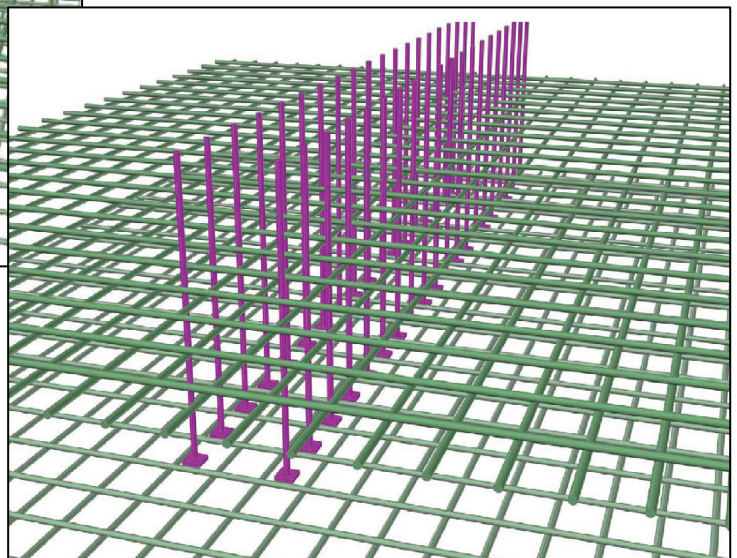
1st layer of bottom reinforcement



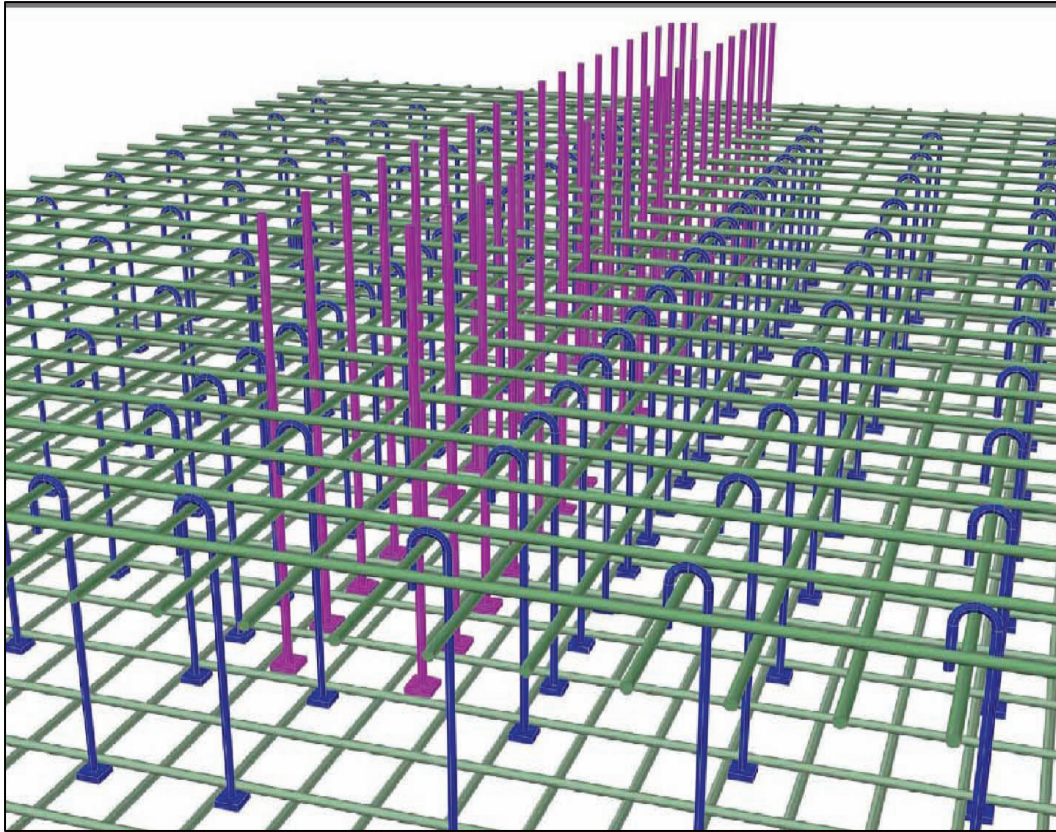
2nd layer of bottom reinforcement



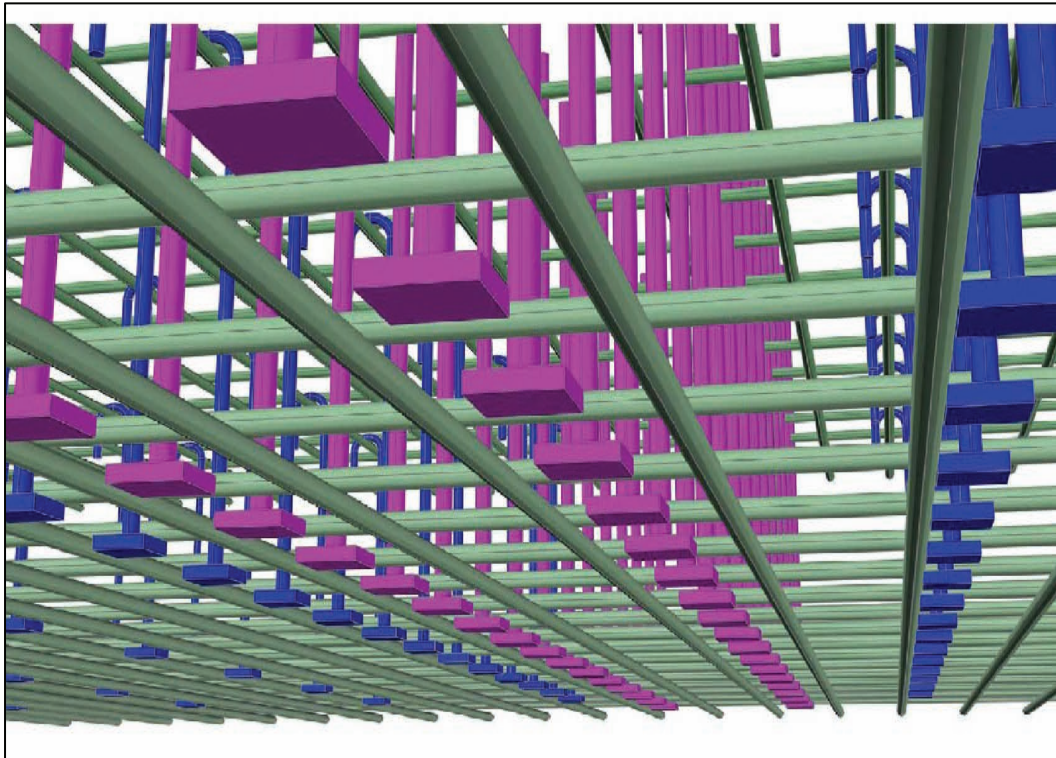
Top reinforcement, both layers



Starter bars for wall



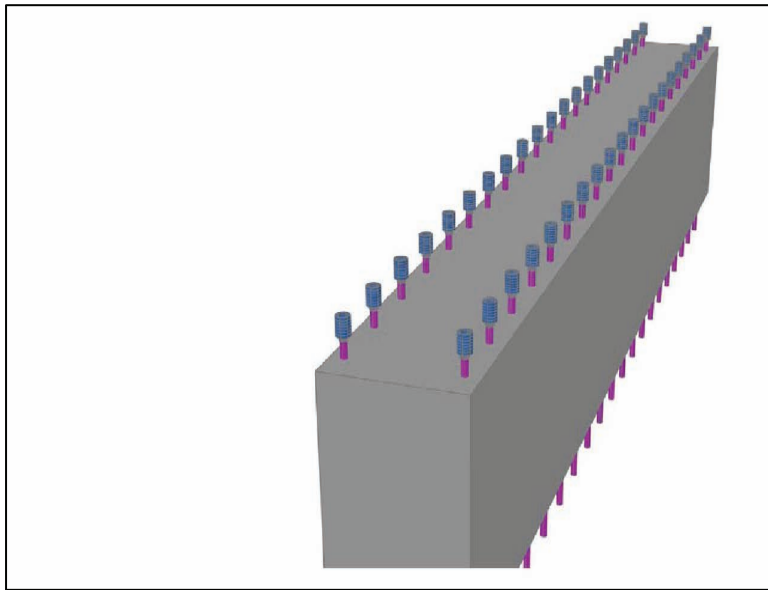
Shear reinforcement in base slab



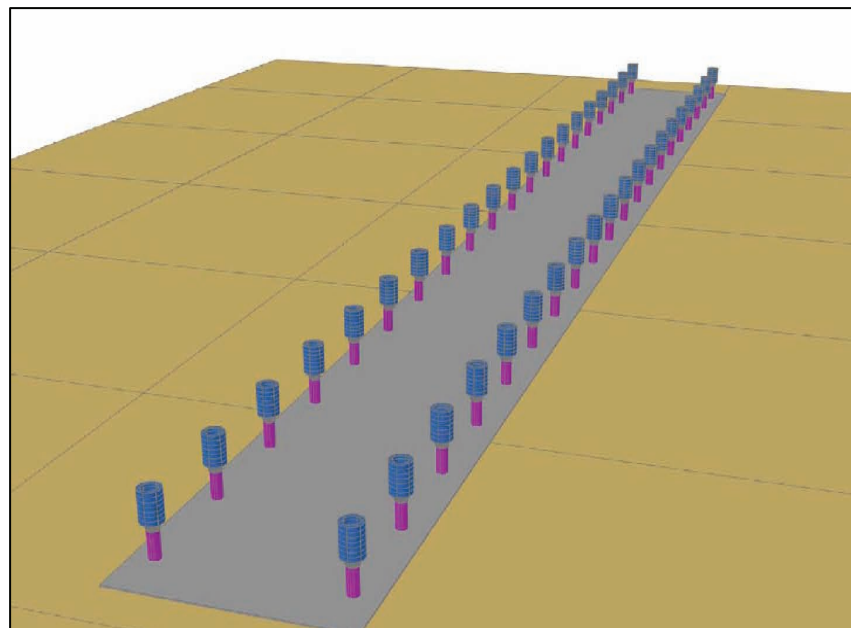
View from beneath

Multi-storey Building

Intermediate floor



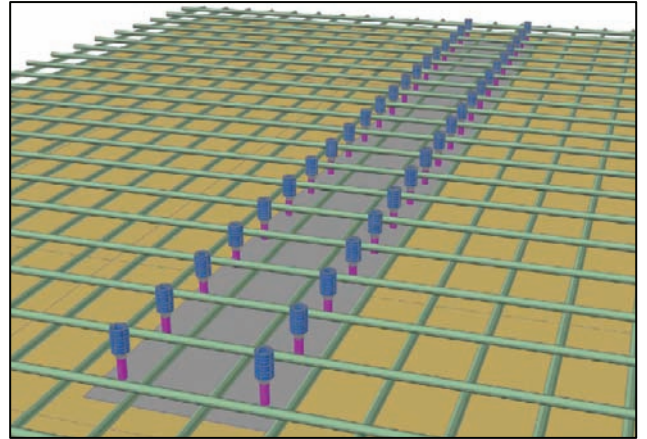
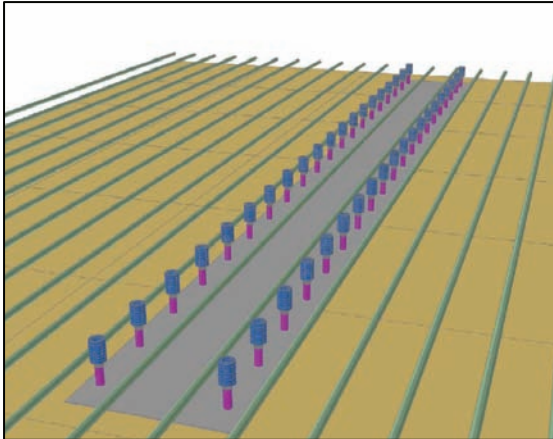
Top of wall with protruding reinforcement couplers



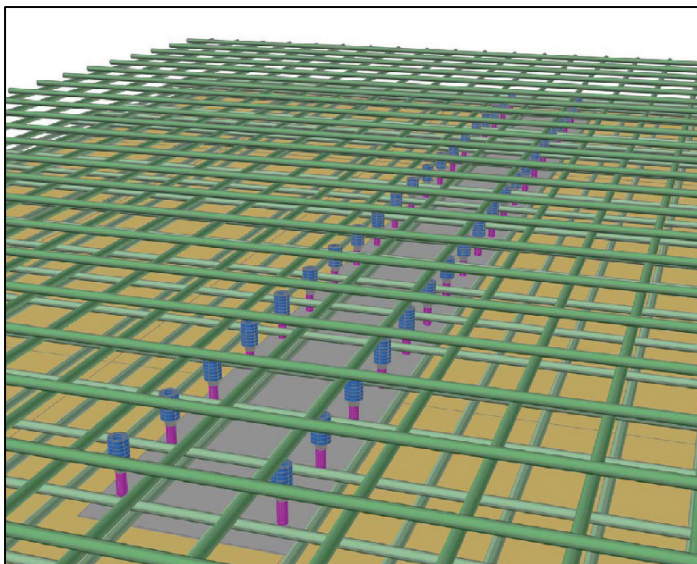
Formwork for intermediate floor



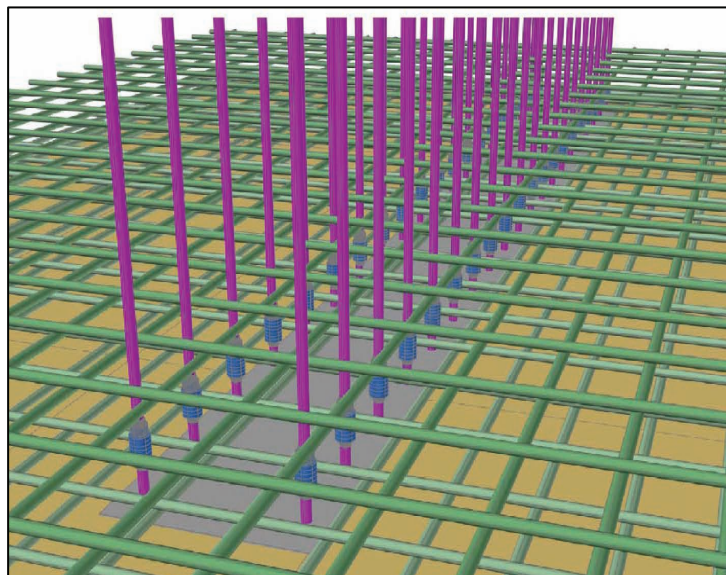
Use of HRC products in combination with Reinforcement carpets (rolls)



Bottom reinforcement for floor slab, both layers



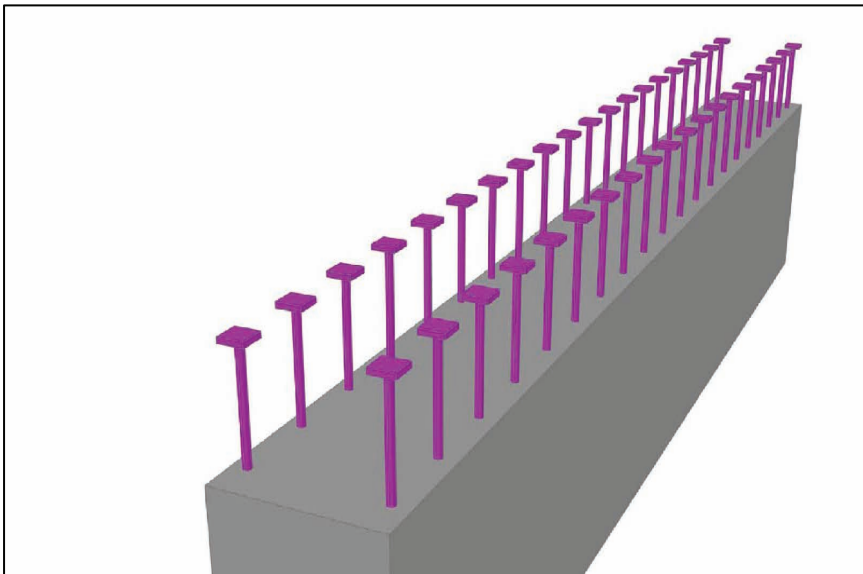
Top reinforcement , both layers



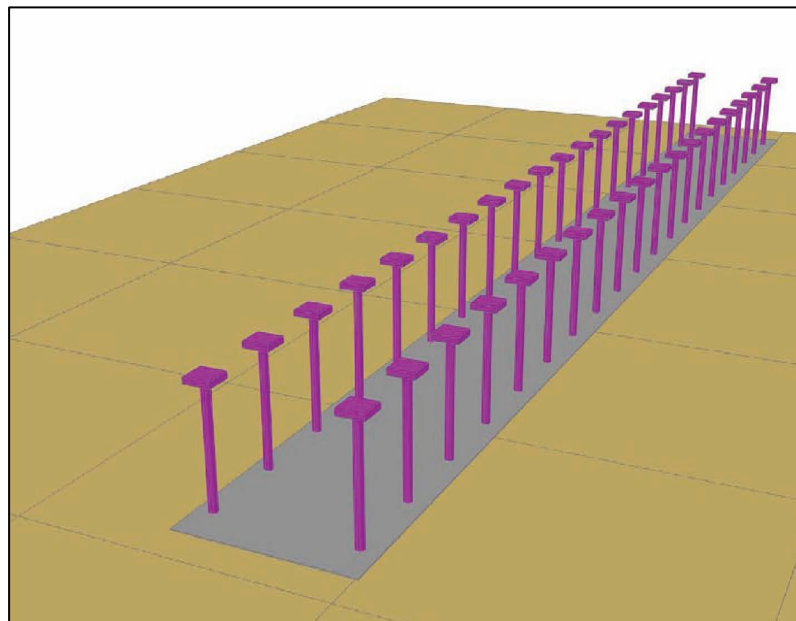
Continuing wall reinforcement

Multi-storey Building

Top floor



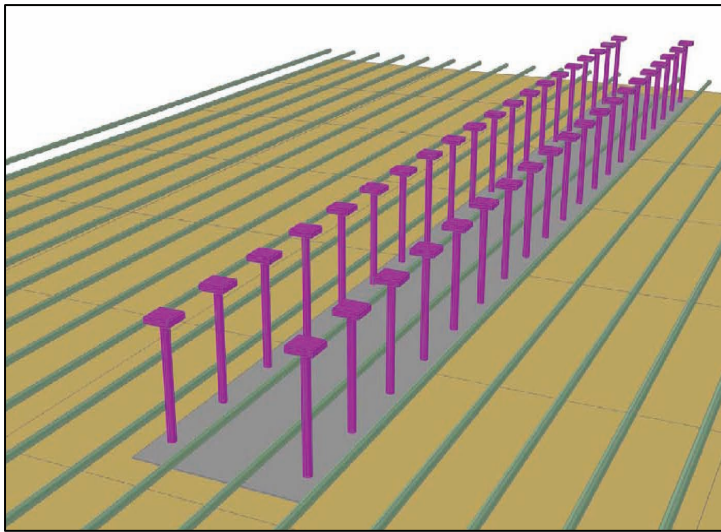
Top of wall with protruding T-headed bars



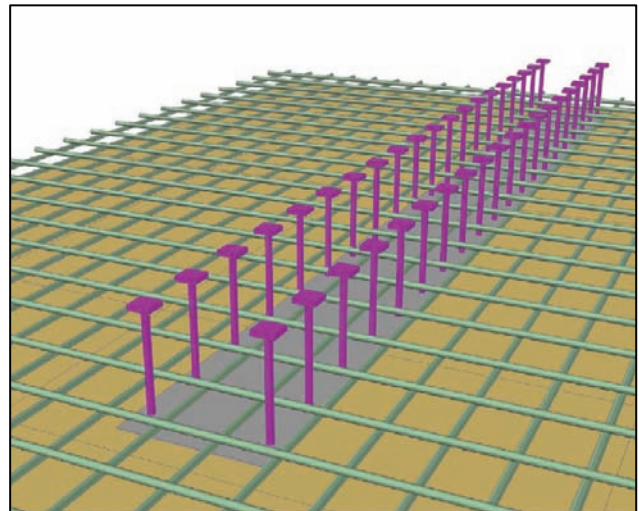
Formwork for top slab



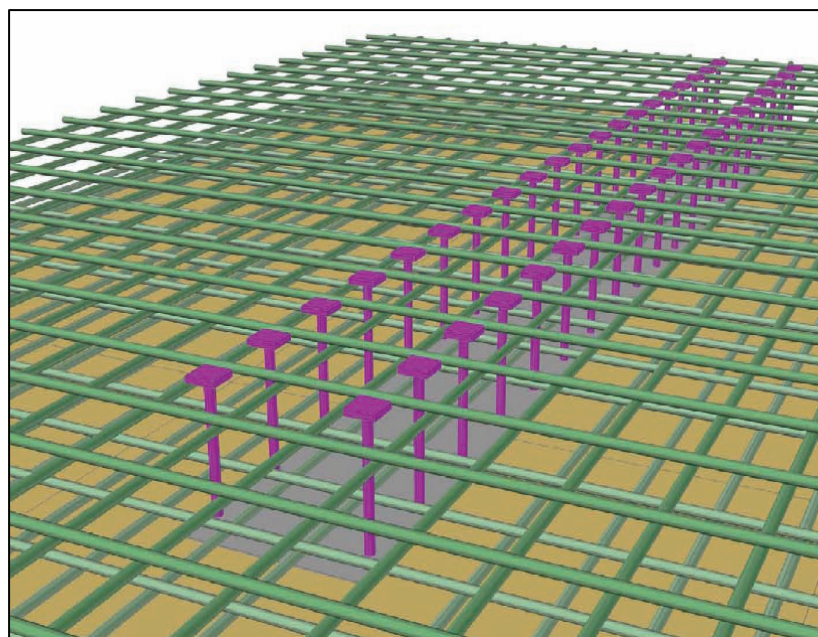
Use of HRC products in combination with Reinforcement carpets (rolls)



1st layer of bottom reinforcement



2nd layer of bottom reinforcement



Top reinforcement, both layers



Use of HRC products in combination with Reinforcement carpets (rolls)

Pictures:



Example for base slab



Example for top slab