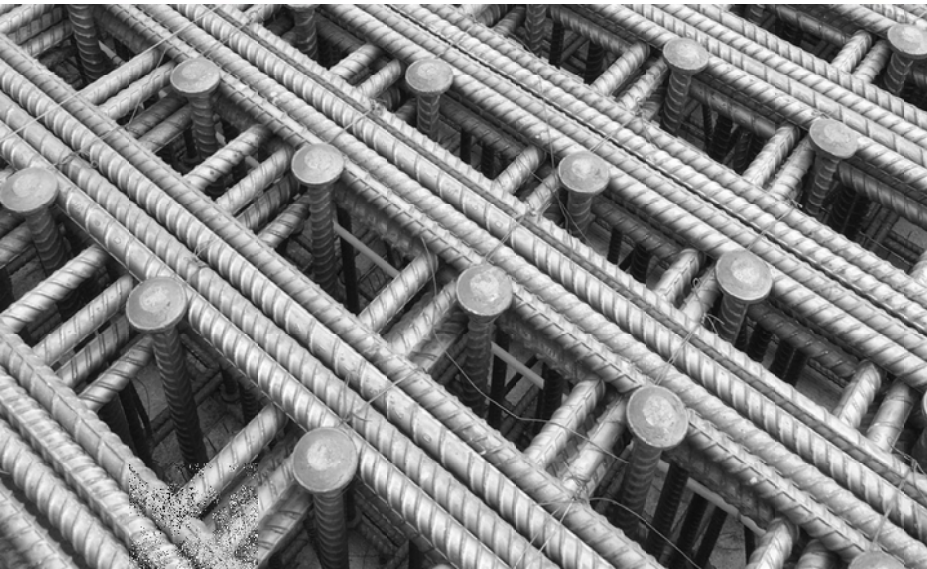




Headed Shear Reinforcement



HRC Headed Shear Reinforcement:

• Substitute Standard Hooks in Shear Applications:

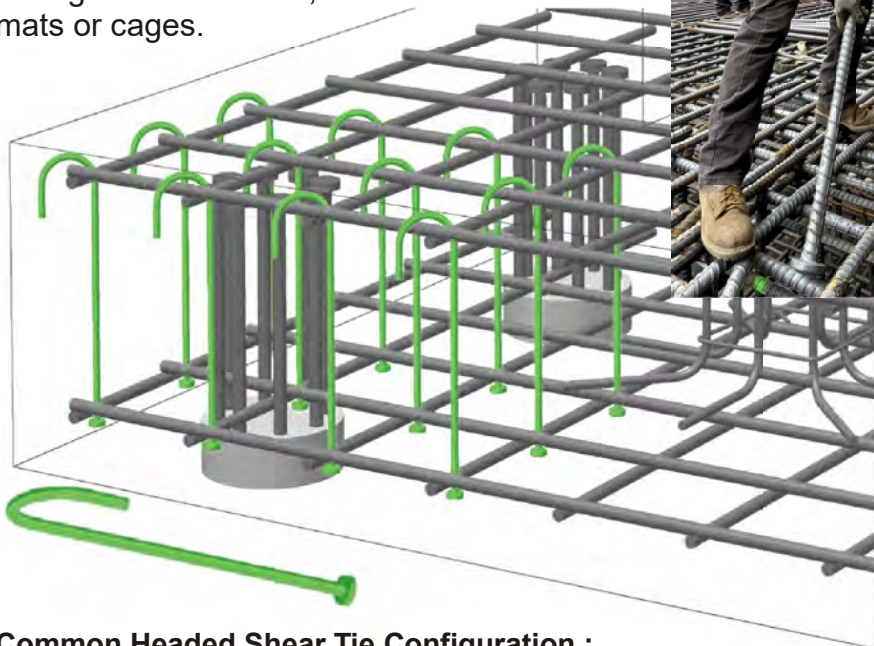
Using the **HRC 555 Series T-Head** has proven effective and practical in shear applications by reducing congestion, improving anchorage and simplifying installation.

• Installation Cost and Time Savings:

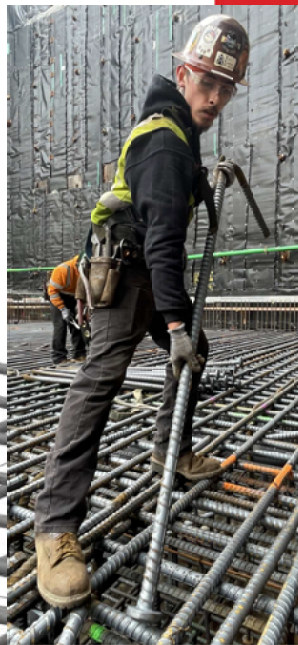
Headed shear reinforcement using the **HRC 555 Series T-Head** on average can save 60-80% on placing time versus standard hook configurations in congested areas.

• Constructability and Performance:

With **HRC 555 Series T-Heads** on one or both ends, shear reinforcement is easily placed through rebar curtains, mats or cages.



Common Headed Shear Tie Configuration :
HRC 555 Series T-Head with Standard Hook



Applications:

Foundations

Walls

Beams

Elevated Slabs

Benefits:

- **Improved Constructability**
- **More Efficient Installation**
- **Reduced Congestion**
- **Improved Concrete Consolidation**



Made in the USA

(714) 557- 1455
www.hrc-usa.com

Headed Reinforcement Corp.

Headed Shear Reinforcement Applications and Advantages

Key Advantages and Features:

- **Reduced Congestion and Increased Safety/Efficiency:** HRC 555 Series headed shear reinforcement reduces congestion, allowing for improved on-site installation efficiency and better concrete consolidation.

- **Simplified Details and Improved Constructability:**

HRC 555 Series headed shear reinforcement can be fabricated in many configurations to suit project demands while meeting Code requirements. Headed bars replacing standard hooked bars can be used with the same installation parameters in many shear reinforcement applications. With head thickness less than the bar diameter, detailing issues are prevented and the bearing area can easily be positioned where it is most effective (e.g., hooked around a crossing bar, engaging maximum member depth).

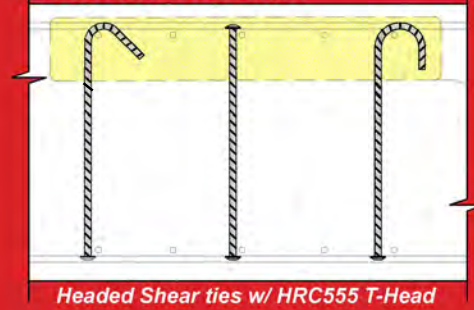
- **Building Code Compliant:**

The current versions of both ACI 318 and CSA A23.3 include explicit provisions for headed shear reinforcement. This provides specifiers with clear design and detailing requirements for this application.



Common Applications:

Foundation Slabs:



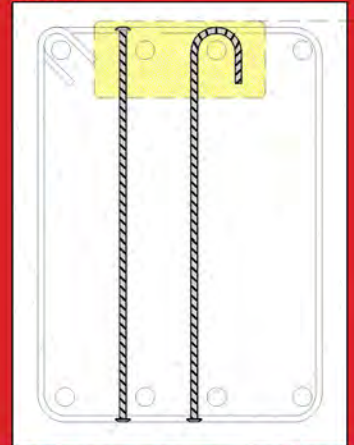
Headed Shear ties w/ HRC555 T-Head

Termination Options:



HRC555 T-Head 90° Hook 135° Hook 180° Hook

Beams:



Headed Single Leg Stirrup w/ HRC555 T-Head



USE THE QR CODE TO ACCESS INSTALL VIDEOS FOR HEADED SHEAR REINFORCEMENT



Rev. 25-0923



Headed Reinforcement Corp.
11200 Condor Ave. Fountain Valley, CA 92708
714-557-1455 714-557-4460 fax

